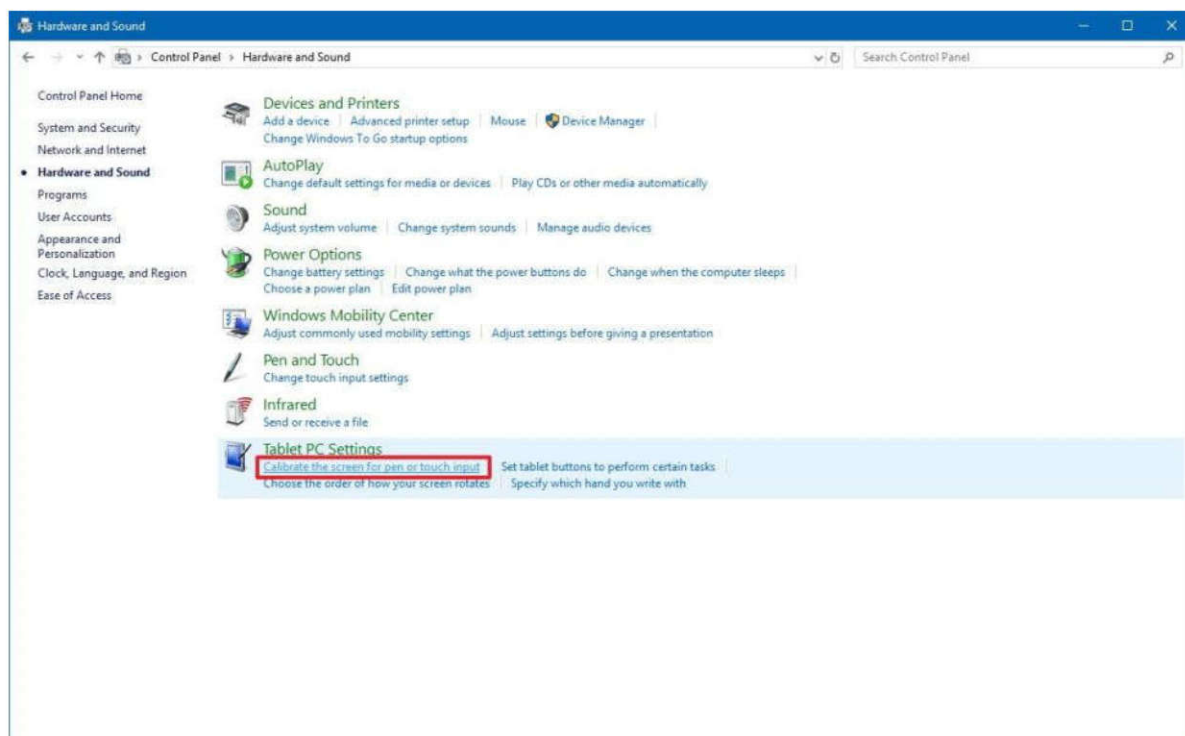


Assign the Touch Overlay to one of multiple displays (identify multiple touch overlays for multiple displays)

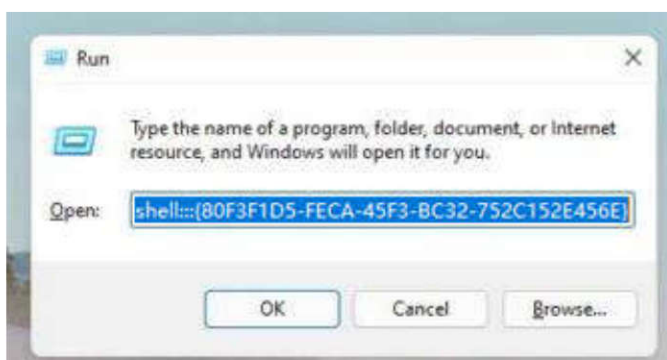
Steps:

1. Open **Control Panel>Tablet PC Settings**

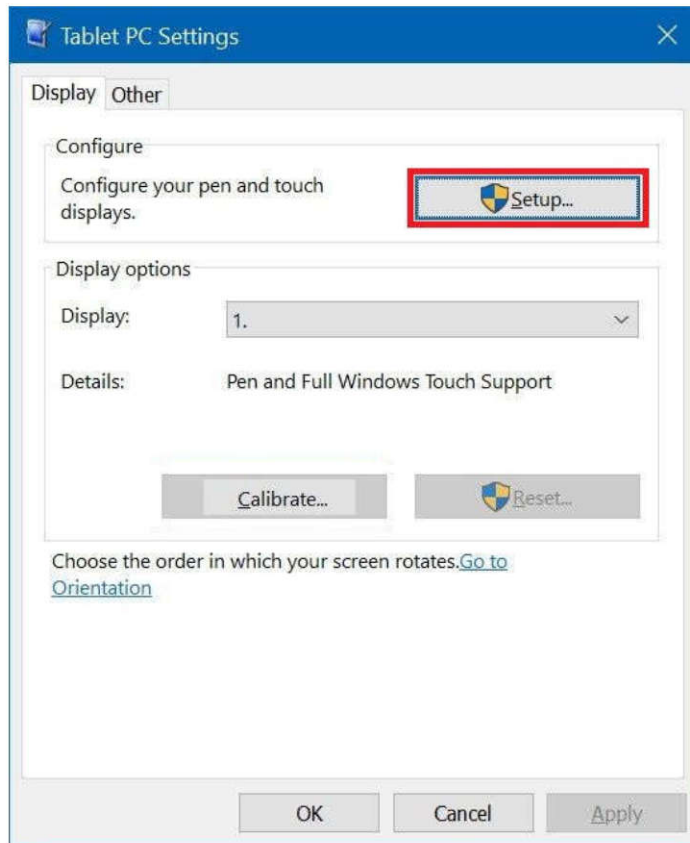


The "Table PC Settings" window will show up.

IF you are unable to find the "Table PC Settings" option, Please press the Win+R keys and input "[shell:::{80F3F1D5-FECA-45F3-BC32-752C152E456E}](#)" to load to "Table PC Settings" window.

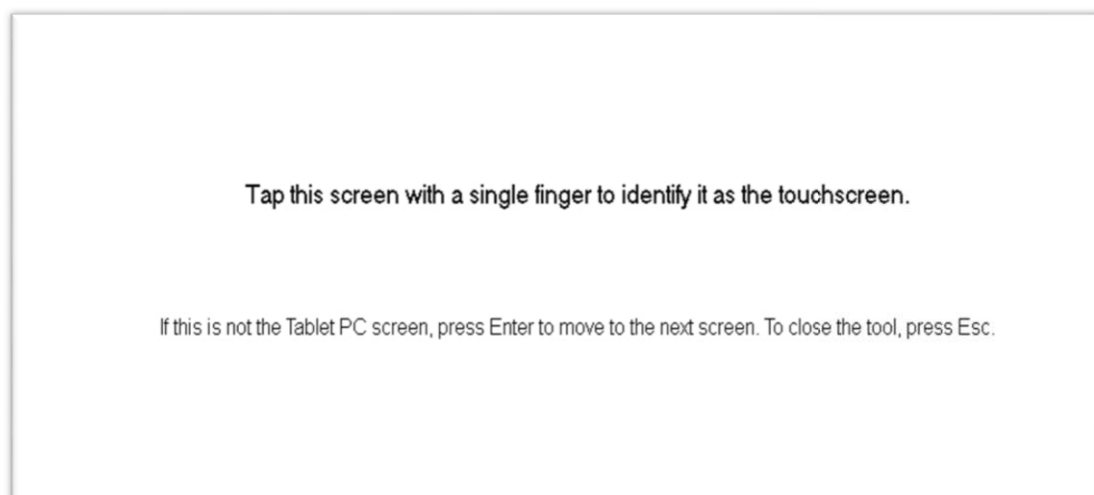


2. Press **Setup** under **Configure**.



3. The identification will be started from the first display.

If this not the Touch screen, press "Enter" to move to the next display.



4. When the TEXT appears on the correct screen, touch the display with overlay to help Windows identify their touch capabilities. Please tap the touch screen multiple times until the TEXT disappears. (If you see touch points appearing on other displays, please continue clicking on the current touch screen, It may require more than 30 times touch on the touch screen until the TEXT disappears.)
5. When finished, click **OK** in the **Tablet PC Settings** window, and you're good to go!